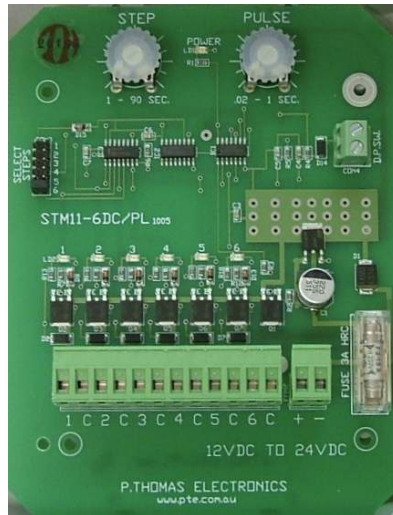


SEQUENTIAL TIMER STM11-6DC



DESCRIPTION

The STM11-6DC is a solid state sequencer designed to provide an adjustable duration pulse to output drivers in a continuous cycle. The time interval between pulse outputs is set by the STEP potentiometer, the pulse duration is set by the PULSE potentiometer. Power ON and each output pulse time is indicated by LED's. Two terminals labelled D.P.S.W. are provided for ON DEMAND cleaning. After pressure switch contact closure, the timer will stop the sequence. When the contact opens the sequence continues from the previous position. Number of outputs is programmed by the SELECT STEPS switch.

SPECIFICATION

Input Voltage : 12 to 24VDC
No.of Outputs : 1 to 6 (selectable on card)
Step Time : 1 - 90 sec.
Pulse Time : 0.02 - 1 sec.
Output Load : 1 Amp.
Operating Temp. : -10 to +55 degrees centigrade

DIMENSIONS AND MOUNTING DETAILS

The STM11-6DC consists of a PC Card 150mm x 115mm x 20mm. A suitable dustproof plastic enclosure with clear lid is available.

P.Thomas Electronics
17 Windsor St. Richmond NSW 2753
Australia
Tel: +612 4578 9611 Fax: +612 4578 9622
Email: admin@ptec.com.au Web: www.ptec.com.au